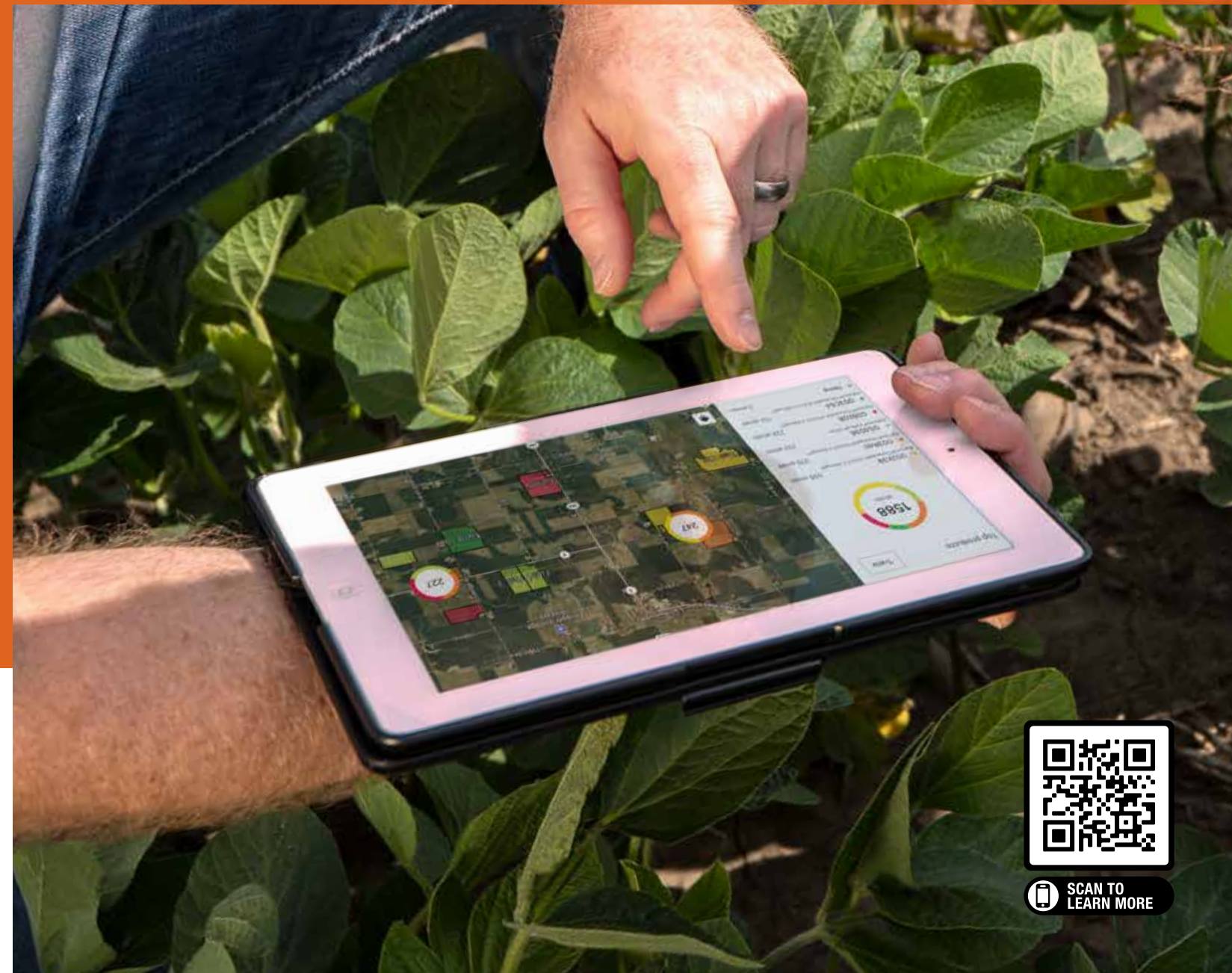


WE'RE LISTENING

In learning about your goals and the unique characteristics of your operation, we tailor our products and recommendations to you—not the other way around. Discover the difference of working with a seed partner who truly listens.

Contact your local Golden Harvest Seed Advisor and visit GoldenHarvestSeeds.com/E-luminate to learn more about our digital tools and service commitment to you.

EXPERIENCE E-LUMINATE INSIGHTS ON THE GO



All photos are either the property of Syngenta or are used with permission.

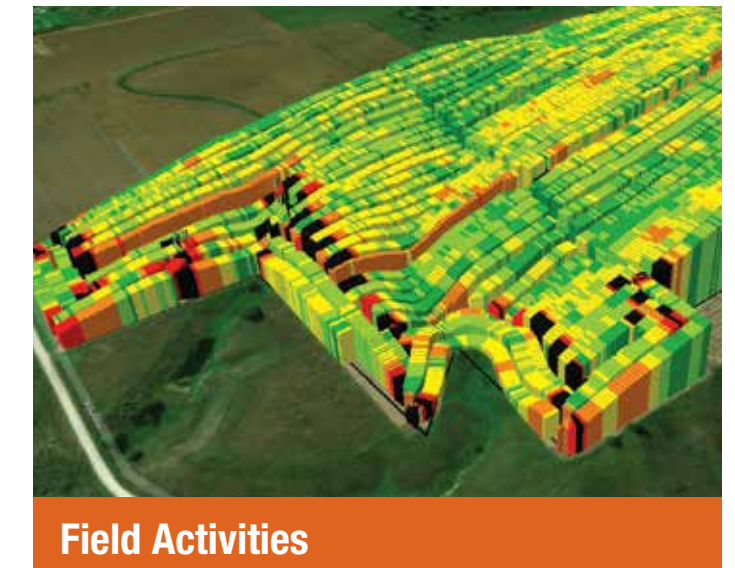
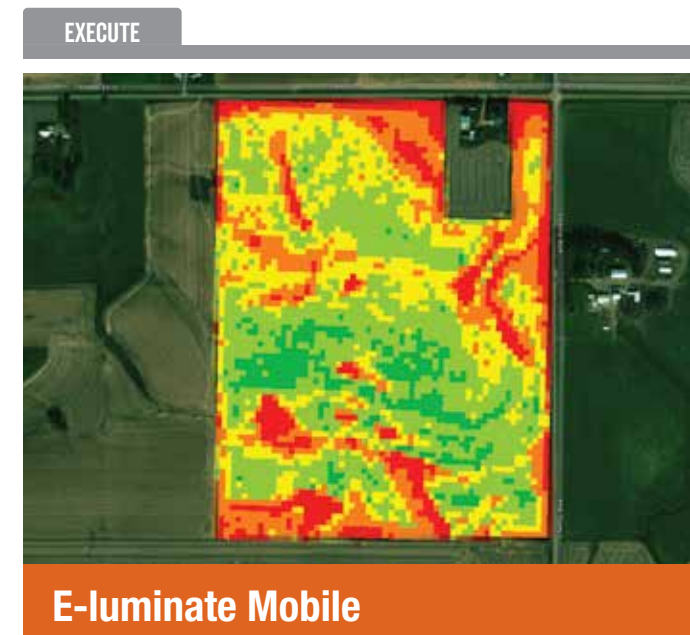
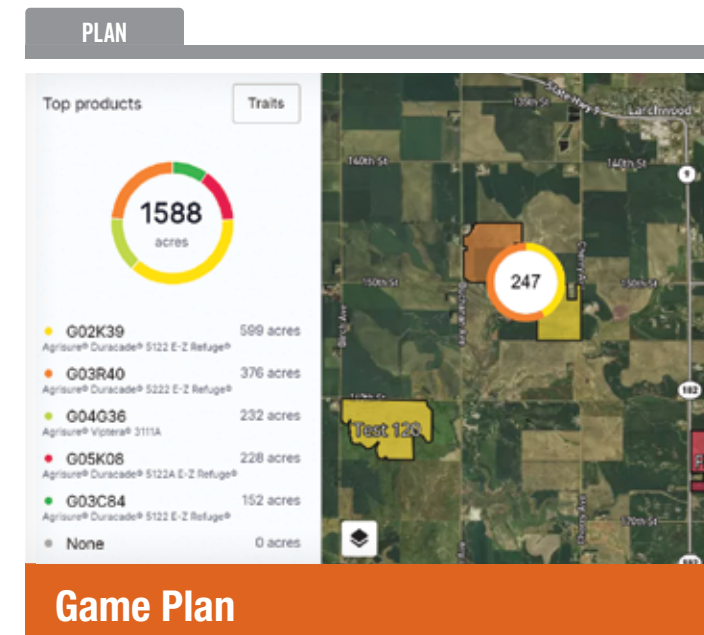
The information contained in this publication is proprietary, it may not be photocopied or reproduced in any form. ©2021 Syngenta, E-luminate®, Golden Harvest®, Rooted in Genetics, Agronomy & Service™ and the Syngenta logo are trademarks of a Syngenta Group Company. All other trademarks are the property of their respective owners.



SCAN TO
LEARN MORE

Data insights drive informed decision making

Each feature within our digital agronomy platform is designed with intention, allowing greater visibility to see what you need to assess in your fields.



It's Included

We offer farmers access to E-luminate® Mobile at no additional cost with their seed purchase. Download the E-luminate Mobile App available on the app store, and discover the convenience of having the ability to make data-driven decisions at your fingertips.



Your Seed Advisor

While our innovative technology and data management go far, our expert team of Seed Advisors make the difference in turning that data in to maximum yield potential. Your local Seed Advisor compiles, analyzes and uploads data and insights onto E-luminate for you, using a wealth of experience to delve deeper into your acres and maximize their potential.